

## Breast Tissue Marker Device

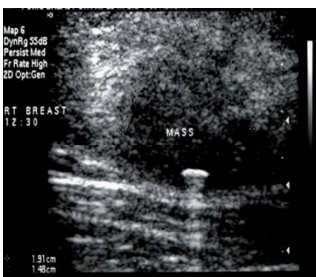


- Barbell shaped pyrolytic carbon coated ceramic with exceptionally biocompatibility and clear imaging characteristics
- Unique shapes designed to prevent migration
- No allergy response or hypersensitivity reported
- Designed for safe, reliable and precise placement during core biopsies
- Permanent and clear visibility with mammography, ultrasound and MRI
- No interference with MRI visualization, lower level of artifact than metal markers
- No interference with tomosynthesis visualization
- Available in three distinct size configurations
- Available for vacuum assisted and core biopsy needle devices



### WHEN TO USE

- Marking after removal of tumor
- Marking microcalcification area after breast vacuum assisted biopsy (VAB)
- Marking of suspicious breast lesions after critical core biopsy
- Orientation for planning radiation therapy



Ultrasound



Mammography

### BIOMARC Qty/Box 10pcs

CODE	SIZE	MARKER	DESCRIPTION
040220	8Gx165,3mm	2x4mm	Flex. Applicator, 8G Mammotome®
040203	9Gx165,3mm	2x4mm	Flex. Applicator, 11G Mammotome® / 9G Eviva®
040204	9 G x 1 2 0 m m	2x4mm	Flex. Applicator, 9G Eviva® / 10G Spirotome®
040239	9Gx363,7mm	2x4mm	Flex. Applicator, 10G SenoRX® / 10G Bexcore® / 9GAtec®
040306	13Gx117,7mm	2x4mm	Rigid Applicator, 13G
040320	14Gx117,7mm	1x5mm	Rigid Applicator, 14G
040300	14Gx117,7mm	1x3mm	Rigid Applicator, 14G
040310	17Gx117,7mm	1x5mm	Rigid Applicator, 17G

On request Vigeo is available to provide needles with different diameter and length